



GARIA

UTILITY VEHICLES



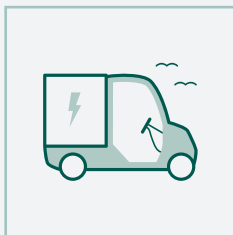
Product description

GARIA UTILITY CITY MODEL

EU type approved for road use as L7e

The Garia Utility City model is electric and EU type approved as an L7e for road use.

Navigating busy city streets and small roads is no issue for the Garia Utility City. It has superior handling, quick acceleration and flows seamlessly in traffic.



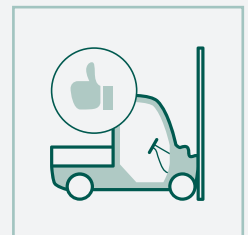
100%
ELECTRIC



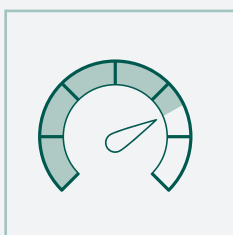
ROAD
LEGAL



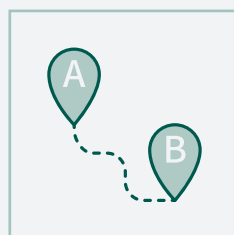
PAYLOAD
UP TO 722 KG



CRASH TESTED
AND SAFE



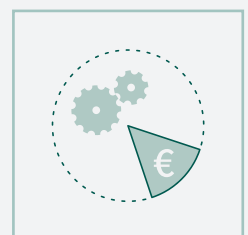
TOP SPEED
45 KM/H



RANGE
UP TO 200 KM



CUSTOM
CONFIGURATIONS



LOW OPERATION
COST

<i>Dimensions</i>	CITY	CITY
	<i>short</i>	<i>extended</i>
Width	1313 mm	1313 mm
Length	3269 mm	3629 mm
Height	1863 mm	1863 mm
Wheel base	2117 mm	2717 mm
Ground clearance	200 mm	200 mm
Bare chassis height	641 mm	641 mm
Cargo bed length (internal dimensions)	1258 mm	1618 mm
Cargo bed width (internal dimensions)	1215 mm	1215 mm

<i>Performance</i>		
Road approval	L7e	L7e
Top speed	45 km/h / 28 mph	45 km/h / 28 mph
Range up to	200 km	200 km
Electric system	48 volt	48 volt
Standard lead acid battery 8 x 6V Trojan T145	60 km / 37 miles	60 km / 37 miles
Lithium battery capacity 120 Ah/6,1 kWh	55 km / 34 miles	55 km / 34 miles
Lithium battery capacity 180 Ah/9,2 kWh	75 km / 47 miles	75 km / 47 miles
Lithium battery capacity 200 Ah/10,2 kWh	85 km / 53 miles	85 km / 53 miles
Lithium battery capacity 240 Ah/12,2 kWh	100 km / 63 miles	100 km / 63 miles
Turning radius	3,9 meter	4,6 meter
Standard motor continuous power (S2 = 60 min.)	3 kW (4Hp)	3 kW (4Hp)
Peak power	11 kW (15Hp)	11 kW (15Hp)
Heavy duty motor continuous power (S2 = 60 min.)	8 kW (11Hp)	8 kW (11Hp)
Peak power heavy duty motor	15 kW (20Hp)	15 kW (20Hp)
Motor controller	Curtis 350 A	Curtis 350 A
Battery capacity, 5h rate (lead acid)	215 Ah	215 Ah
Chassis	Galvanized steel frame	Galvanized steel frame
Brakes - hydraulic	Discs front, drums rear	Discs front, drums rear
Tires	165 / 70 R13 C 88	165 / 70 R13 C 88
Actual mass, with standard battery	828 kg	878 kg
Payload, incl. passengers (lead acid)	522 kg	622 kg
Payload, incl. passengers (lithium, 120 Ah)	622 kg	722 kg
Payload, incl. passengers (lithium, 180 Ah)	591 kg	691 kg
Payload, incl. passengers (lithium, 200 Ah)	570 kg	670 kg
Payload, incl. passengers (lithium, 240 Ah)	582 kg	682 kg
Technically permissible laden mass /max. weight	1350 kg	1500 kg
Towing Capacity (braked trailer)	500 kg	500 kg
Towing Capacity, (unbraked trailer)	300 kg	300 kg
Climb Angle	25%	25%