



G A R I A

UTILITY VEHICLES



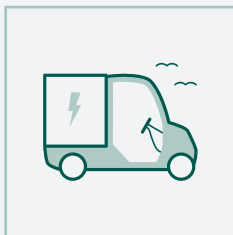
Product description

GARIA UTILITY PARK MODEL

A fit-to-task vehicle for pedestrian areas and car free zones.

This CE compliant non-road legal model is made for navigating tight spaces that require agility when performing tasks in smaller areas. Ideal for use in parks with small paths and curving roads and indoor in warehouses.

Reliability, ergonomics and zero emission meet comfort, functionality and quality design. The best electric utility vehicle is one that covers all your needs.



100%
ELECTRIC



TURNING
RADIUS
FROM 3,9 M



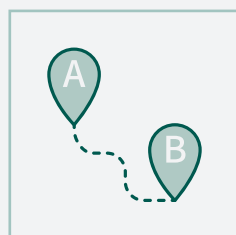
PAYLOAD
UP TO 787 KG



NARROW
SPACES



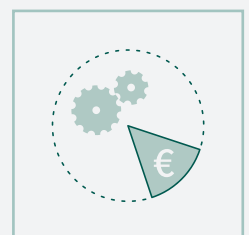
TOP SPEED
30 KM/H



RANGE
UP TO 200 KM



CUSTOM
CONFIGURATIONS



LOW OPERATION
COST

Garia Utility Transforming E-mobility For You

PARK

PARK

<i>Dimensions</i>	<i>short</i>	<i>extended</i>
Width	1313 mm	1313 mm
Length	3269 mm	3629 mm
Height	1863 mm	1863 mm
Wheel base	2117 mm	2717 mm
Ground clearance	200 mm	200 mm
Bare chassis height	641 mm	641 mm
Cargo bed length (internal dimensions)	1258 mm	1618 mm
Cargo bed width (internal dimensions)	1215 mm	1215 mm

<i>Performance</i>		
Road approval	Local	Local
Top speed	30 km/h / 19 mph	30 km/h / 19 mph
Range up to	200 km	200 km
Electric system	48 volt	48 volt
Standard lead acid battery 6 x 8V Trojan T875	40 km / 25 miles	40 km / 25 miles
Upgrade option lead acid 8 x 6 V Trojan T145	60 km / 37 miles	60 km / 37 miles
Lithium battery capacity 120 Ah/6,1 kWh	55 km/34 miles	55 km / 34 miles
Lithium battery capacity 180 Ah/9,2 kWh	75 km / 47 miles	75 km / 47 miles
Lithium battery capacity 200 Ah/10,2 kWh	85 km / 53 miles	85 km / 53 miles
Lithium battery capacity 240 Ah/12,2 kWh	100 km / 63 miles	100 km / 63 miles
Turning radius	3,9 meter	4,6 meter
Standard motor continuous power (S2 = 60 min.)	3 kW (4Hp)	3 kW (4Hp)
Peak power	11 kW (15Hp)	11 kW (15Hp)
Heavy duty motor continuous power (S2 = 60 min.)	8 kW (11Hp)	8 kW (11Hp)
Peak power heavy duty motor	15 kW (20Hp)	15 kW (20Hp)
Motor controller	Curtis 350 A	Curtis 350 A
Battery capacity, 5h rate (lead acid)	145 Ah	145 Ah
Chassis	Galvanized steel frame	Galvanized steel frame
Brakes - hydraulic	Discs front, drums rear	Discs front, drums rear
Tires	165 / 70 R13 C 88	165 / 70 R13 C 88
Actual mass, with standard battery	763 kg	813 kg
Payload, incl. passengers (lead acid)	587 kg	687 kg
Payload, incl. passengers (lithium, 120 Ah)	687 kg	787 kg
Payload, incl. passengers (lithium, 180 Ah)	656 kg	756 kg
Payload, incl. passengers (lithium, 200 Ah)	635 kg	735 kg
Payload, incl. passengers (lithium, 240 Ah)	647 kg	747 kg
Technically permissible laden mass /max. weight	1350 kg	1500 kg
Towing Capacity (braked trailer)	500 kg	500 kg
Towing Capacity, (unbraked trailer)	300 kg	300 kg
Climb Angle	25%	25%